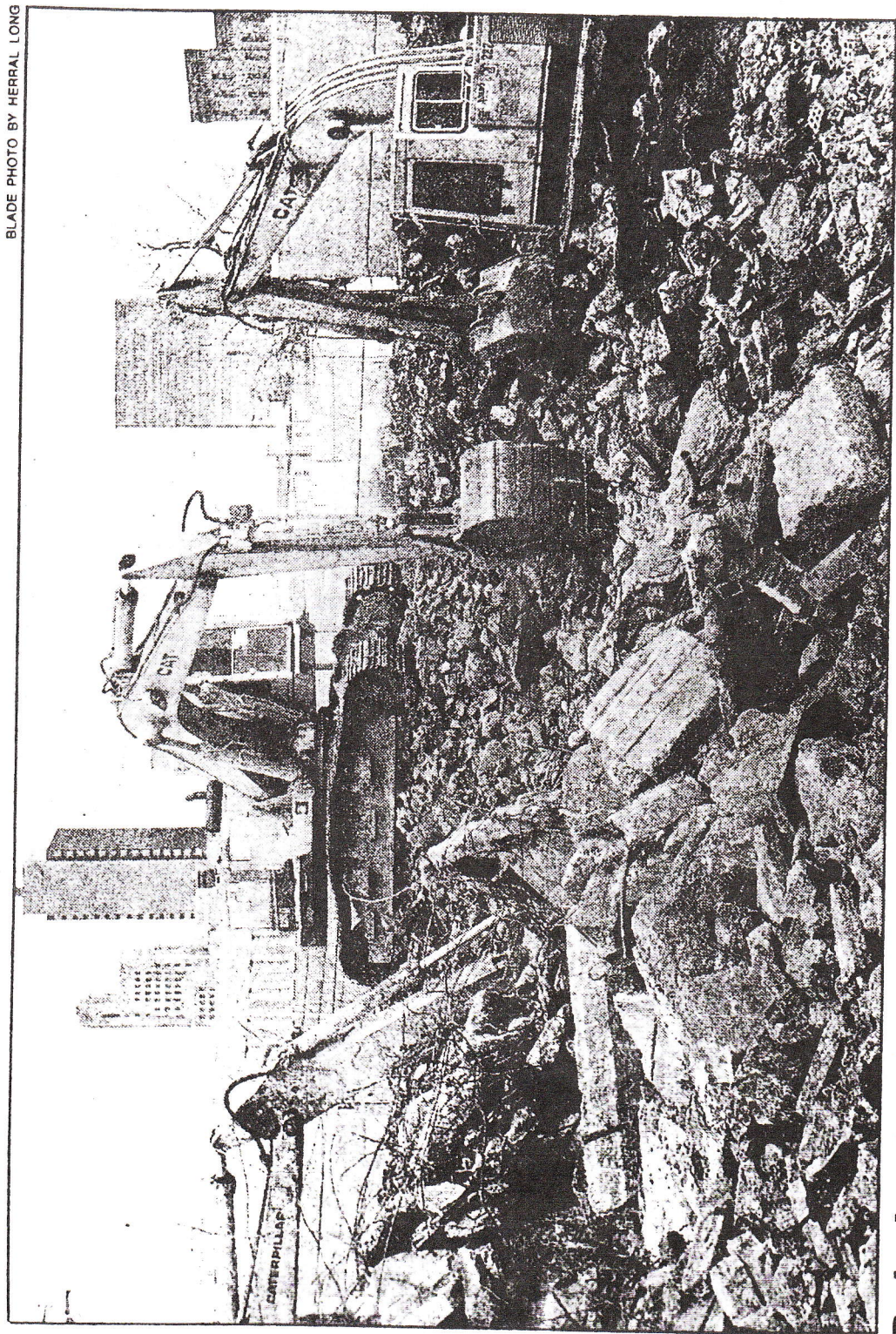


BLADE PHOTO BY HERRAL LONG



## Dairy's demise

*Wide 2-16-95*

A pile of rubble remains at the final chapter in the history of the Page Dairy Co., demolition of which began Dec. 14. The razing of the

building, which closed in 1975 and had been the target of vandals, is the first step in revitalizing the nearby Central Union Station.