

2nd page 11-1-94

Practice makes perfect

Mixup in bidding forces dry run on razing of Page Dairy

BY AL McKAY
BLADE STAFF WRITER

Local officials gathered yesterday to see what would happen when a 4,000-pound wrecking ball hit the side of the old Page Dairy Co., which closed in 1975 and has been a target of vandals ever since.

U.S. Rep. Marcy Kaptur (D., Toledo) and Jolene Molitoris, federal railroad administrator, climbed aboard the crane swinging the steel ball, which easily punched a hole in a glass-block window, then broke decorative brickwork along the top.

But the ball bounced off the brick side of the building with hardly a scratch, which was not surprising because the Toledo-Lucas County Port Authority later admitted it set up a "symbolic demolition" to accommodate Miss Kaptur, who made a speech, and Ms. Molitoris, who also spoke.

Robert Seyfang, architect for the project, and John Loftus, seaport director for the port authority, said

demolition of the former dairy is expected to be delayed about two weeks because of a mixup in the bid selection for the dairy razing.

When bids were opened in August, some of the bidders included estimates for removing old fuel tanks and asbestos, but others did not.

"So the port authority, to avoid any problems, decided to rebid the whole job. Those bids are due in by Nov. 15," the architect said.

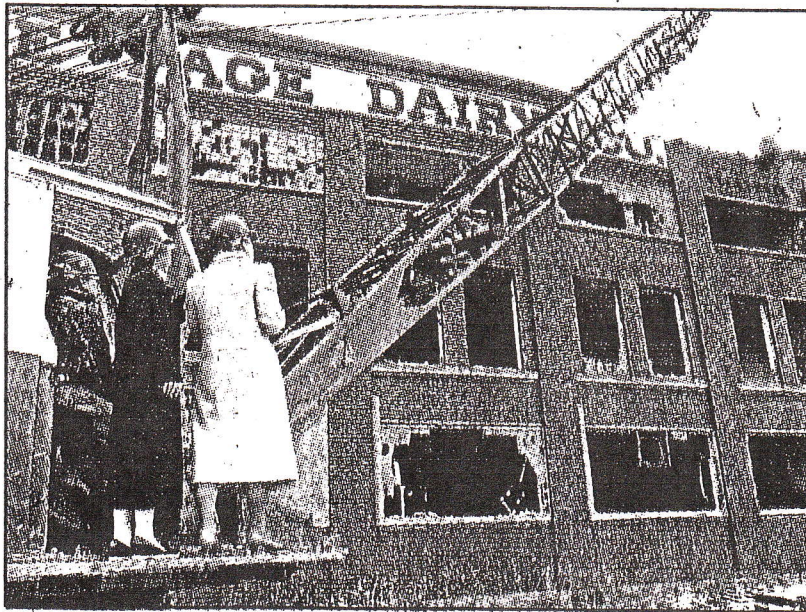
Yesterday's display of razing power was supplied by Toledo Caisson Corp, 439 West Sylvania Ave., which agreed to take a few symbolic swings at the former dairy for \$1,000.

"We've already put in a huge hunk of change into this project, so \$1,000 really won't make much difference," Mr. Loftus said.

About \$150,000 already has been spent.

Miss Kaptur said demolition of the Page building, which is expected to take up to 90 days, is the first step in revitalizing the nearby Central Union Station.

BLADE PHOTO BY HERRAL LONG



Jolene Molitoris, left, federal railroad administrator, and Rep. Marcy Kaptur watch as the wrecking ball strikes the old dairy.